

PerfCake 8.x

Developers' Guide

Pavel Macík
Martin Večeřa

PerfCake 8.x: Developers' Guide

by Pavel Macík and Martin Večeřa

Table of Contents

Acknowledgements	viii
1. Introduction	1
I. General Contributors' and Developers' Guide	2
2. Developing with PerfCake	5
2.1. Building from source	5
2.2. Using PerfCake from a Maven project	5
2.3. Maven Project	5
2.3.1. Project Structure	5
2.3.2. Maven Profiles	6
2.3.3. Standard Maven Goals	6
2.3.4. Documentation	6
2.3.5. Code Style with Checkstyle	6
2.3.6. License	7
2.3.7. JaCoCo Code Coverage	7
2.3.8. FindBugs Report	7
2.3.9. Digital Signatures	7
2.3.10. Distribution	7
2.3.11. Transformation of Scenarios	8
2.4. Coding Standards	8
2.4.1. Source file basics	9
File name	9
File encoding: UTF-8	9
Special characters	9
2.4.2. Source file structure	10
License or copyright information, if present	10
Package statement	10
Import statements	10
Class declaration	11
2.4.3. Formatting	11
Braces	12
Block indentation: +3 spaces	12
One statement per line	12
Column limit: 400	13
Line-wrapping	13
Whitespace	13
Grouping parentheses: recommended	15
Specific constructs	15
2.4.4. Naming	18
Rules common to all identifiers	18
Rules by identifier type	18
Camel case: defined	20
2.4.5. Programming practices	21
@Override: always used	21
Caught exceptions: not ignored	21
Static members: qualified using class	21
Finalizers: not used	21
2.4.6. JavaDoc	22
Formatting	22
The summary fragment	23
Where JavaDoc is used	23
2.5. Test Development	24

- 2.6. Writing Guides 24
- 3. PerfCake Architecture 25
 - 3.1. PerfCake Architecture Overview 25
 - 3.2. Run Info 26
 - 3.3. Generators 26
 - 3.3.1. Generators Architecture 27
 - 3.3.2. Writing a New Generator 28
 - 3.4. Message Senders 28
 - 3.5. Receivers and Correlators 29
 - 3.6. Sequences 30
 - 3.7. Reporting 31
 - 3.7.1. Reporting Architecture 31
 - 3.7.2. Reporters 32
 - 3.7.3. Destinations 32
 - 3.7.4. Accumulators 32
 - 3.8. Validators 33
 - 3.8.1. Validators Architecture 33
 - 3.8.2. Writing a New Validator 33
- II. Core Developers' Guide 35
 - 4. Release Procedure 37
 - 5. Continuous Integration 38

List of Figures

3.1. Architecture Overview	25
3.2. Generators Architecture	27
3.3. Reporting Architecture	31
3.4. Validators Architecture	33
4.1. Prepare a release branch	37
4.2. Merge the changes to the devel branch	37
4.3. Merge the changes to the master branch as well	37
4.4. Merge the changes to the master branch as well	37

List of Tables

2.1. XML plugin properties	8
2.2. Special characters examples	10
2.3. Camel case examples	20

List of Examples

2.1. Ignoring a chackstyle warning	7
--	---

Acknowledgements

We would like to thank to everybody who helped PerfCake to be born and to grow up by any means. Special thanks goes to our contributors who we love!

Chapter 1. Introduction

PerfCake is a lightweight performance testing framework and a load generator. It has a component design which means that you can build up your own performance measurements from some basic building blocks. This allows a high flexibility in configuration and the components can be reused in different tests.

PerfCake has a pluggable architecture with many supported interfaces/protocols out of the box (HTTP, REST, JMS, JDBC, SOAP, socket, file etc.). If you need support for another interface ask our community or provide the implementation. It is really easy as you will find later in this guide.

Except for interfaces/protocols, PerfCake also supports various means of generating the load. It can send a preset count of messages, it can send as many messages as the target system is able to consume for a given period of time, or it can carefully aim for maximum allowable throughput.

What would be a measurement with proper reports?! PerfCake supports various means of reporting the measured values including average throughput (possibly over a time window), memory consumption of the target JVM with linear regression analysis to see if there is a memory leak and others. There are various output formats supported. Except for console or a log file, we support CSV that can be imported as a spreadsheet. In the future we plan to add more output formats as the requests arise.

What if the target system crashed and just quickly returns error messages? There are validators that can validate the response to see if everything is OK. With validators you can also use PerfCake to write an end-to-end test of your system. Like in case of JDBC - when you provide a list of SQL commands and expected results.

To run PerfCake, one just needs to supply a so called "scenario". This is an XML file that describes the building blocks that should be used together. Then you just run the scenario using Maven or a prepared shell script if you downloaded just the binaries. We understand the need for an IDE plugin and this is one of our short term goals. You can also use PerfCake in your application using its API. In future we plan integration with Arquillian and testing frameworks including TestNG and junit.

We hope to make your performance testing a real piece of cake!

This book is further divided into two main parts. This first part describes general information useful for all developers and contributors. The second part is intended for core developers with major control over the project. It describes release procedure, automatic site generation etc.

Part I. General Contributors' and Developers' Guide

This part contains general information suitable for all project contributors and developers. It is a great starting point for anybody with the aspiration to contribute to PerfCake, which we really love.

Table of Contents

2. Developing with PerfCake	5
2.1. Building from source	5
2.2. Using PerfCake from a Maven project	5
2.3. Maven Project	5
2.3.1. Project Structure	5
2.3.2. Maven Profiles	6
2.3.3. Standard Maven Goals	6
2.3.4. Documentation	6
2.3.5. Code Style with Checkstyle	6
2.3.6. License	7
2.3.7. JaCoCo Code Coverage	7
2.3.8. FindBugs Report	7
2.3.9. Digital Signatures	7
2.3.10. Distribution	7
2.3.11. Transformation of Scenarios	8
2.4. Coding Standards	8
2.4.1. Source file basics	9
File name	9
File encoding: UTF-8	9
Special characters	9
2.4.2. Source file structure	10
License or copyright information, if present	10
Package statement	10
Import statements	10
Class declaration	11
2.4.3. Formatting	11
Braces	12
Block indentation: +3 spaces	12
One statement per line	12
Column limit: 400	13
Line-wrapping	13
Whitespace	13
Grouping parentheses: recommended	15
Specific constructs	15
2.4.4. Naming	18
Rules common to all identifiers	18
Rules by identifier type	18
Camel case: defined	20
2.4.5. Programming practices	21
@Override: always used	21
Caught exceptions: not ignored	21
Static members: qualified using class	21
Finalizers: not used	21
2.4.6. JavaDoc	22
Formatting	22
The summary fragment	23
Where JavaDoc is used	23
2.5. Test Development	24
2.6. Writing Guides	24
3. PerfCake Architecture	25
3.1. PerfCake Architecture Overview	25

3.2. Run Info	26
3.3. Generators	26
3.3.1. Generators Architecture	27
3.3.2. Writing a New Generator	28
3.4. Message Senders	28
3.5. Receivers and Correlators	29
3.6. Sequences	30
3.7. Reporting	31
3.7.1. Reporting Architecture	31
3.7.2. Reporters	32
3.7.3. Destinations	32
3.7.4. Accumulators	32
3.8. Validators	33
3.8.1. Validators Architecture	33
3.8.2. Writing a New Validator	33

Chapter 2. Developing with PerfCake

This chapter describes various useful information for using PerfCake as a dependency in your own project. It further provides guidance for possible project contributors.

2.1. Building from source

After cloning the GitHub repository with PerfCake, you can easily build it using Maven supposing you have latest JDK and Maven installed.

To build the project, you can use:

```
$ mvn clean install -DskipTests
```

You can smoothly import PerfCake parent pom.xml as a project in most modern IDEs. We use JetBrains IntelliJ Idea.

2.2. Using PerfCake from a Maven project

In this section, you can find information on using PerfCake in your own Maven project in case you do not want to or you cannot contribute directly to PerfCake repository, or you just want to PerfCake's API.

For inclusion into your project, you can search for PerfCake artifacts at <http://search.maven.org>. In the results click at the version number and you will see snippets for various build systems. For Maven and version 8.0 you just include the following XML piece into your project dependencies.

```
1 <dependency>
2   <groupId>org.perfcake</groupId>
3   <artifactId>perfcake</artifactId>
4   <version>8.0</version>
5 </dependency>
```

2.3. Maven Project

The following Maven plugins and their goals can be used within the PerfCake project when you work with the PerfCake's source code.

2.3.1. Project Structure

There is a parent project composed of three child Maven modules. There is a Bill Of Materials that defines all dependencies used with PerfCake, the PerfCake Agent which installs into the application under inspection and needs to be compiled with an older Java version because of compatibility reasons, and the main core of PerfCake.

Because of the split into multiple child modules, there is a need to run `mvn install -DskipTests` to install the parent module into your local repository when working on the *devel* Git branch.

The modules are as follows.

- *perfcake-bom* Bill Of Materials with dependencies definitions.
- *perfcake* Core PerfCake module, contains all the code needed to build the product.

- *perfcake-agent* JVM Agent to be used when running target application (application under inspection) with memory monitoring. This module is compiled with an older Java version (1.5).

2.3.2. Maven Profiles

Use the following Maven profiles to achieve desired results.

- *production* Generates output classes without debugging information. This produces smaller results and is intended for binary distributions. This must be used during the release procedure.
- *sign* Automatically adds digital signatures of build artifacts during the *install* phase. Needs properly configured GPG agent.

Profiles for controlling test groups can be found in section Section 2.5, “Test Development” .

2.3.3. Standard Maven Goals

We try to minimize the necessity for running standard Maven goals in a different manner or in a way they are not originally intended to. We also try to make sure all of these goals work with the parent project but this is not always possible. In case you realize the goal does not work in the parent directory, try switching to the *perfcake* module. So far we use the following goals.

- *clean* Cleans the compiled artifacts and reports. Basically deletes the `target` directory.
- *compile* Compiles the whole project including tests.
- *test* Executes all the tests. See section Profiles for controlling test groups can be found in section Section 2.5, “Test Development” for Maven profiles that control test groups.
- *install* Install project artifacts into the local Maven repository. This is needed when working in the *devel* Git branch with snapshot versions.
- *package* Packages the distribution jar files.
- *exec:exec* Works only in the *perfcake* module. Runs PerfCake, parameters are passed using `-Dparam=value` . Never use *exec:java* directly as Maven will comply about missing configuration (the configuration is passed in from *exec:exec*).
- *site* Works only in the *perfcake* module. Generates the Maven HTML site. Consumes output of other plugins like JaCoCo. If the other consumables should be part of the generated site, they must be ready before calling this goal.

2.3.4. Documentation

It is possible to generate JavaDoc for individual Maven modules as well as a single aggregated package for all of them.

- *javadoc:javadoc* Generates documentation for the current Maven module.
- *javadoc:aggregate* Generates aggregated documentation package when executed in the parent project.

2.3.5. Code Style with Checkstyle

With checkstyle there is a (limited) possibility to check your code formatting that it aligns according to this guide. There are some issues in checkstyle that report false positives. In this case you can use the following format of a comment to ignore a warning for th the given line.

Example 2.1. Ignoring a checkstyle warning

```
1 ...
2     // follow the exact format of the comment: "//
@checkstyle.ignore(<warn1>|<warn2>) - <comment>
3     final long results[] = new long[CYCLES]; //
@checkstyle.ignore(ArrayTypeStyle) - A bug in checkstyle.
4 ...
```

You can see the output with each build and also by calling `mvn checkstyle:check`. Checkstyle is configured to just display warnings and not fail the build. A report is created when the site goal is executed. To get just this report call `mvn checkstyle:checkstyle`.

The resulting report can be found in the `target/site/checkstyle.html` directory.

2.3.6. License

PerfCake is licensed under Apache License 2.0 and the license text can be found in `LICENSE.txt` file. `license-maven-plugin` is used to check that each file has the appropriate header.

- `license:check-file-header` Checks the current status of the license header in project files. This goal claims to modify the files but nothing is done in fact. The output is a bit misleading.
- `license:update-file-header` Performs the actual update of file headers. Note that we recognize the true license by two hard space characters at the end of some blank lines. Carefully configure your IDE to preserve these.

2.3.7. JaCoCo Code Coverage

JaCoCo is configured to use a Java Agent so no class instrumentation is needed. The agent is automatically switched on for running tests. The only goal needed is report generation (`jacoco:report`) which must be done together or after test execution.

The resulting report can be found in the `target/site/jacoco` directory.

2.3.8. FindBugs Report

We use FindBugs to warn us about bad code practices. To obtain the report execute the `findbugs:findbugs` goal. FindBugs works with the compiled classes, so for a fresh report, the `compile` target must be invoked.

To inspect the code on the fly, run the `findbugs:gui` tool. Please note that it only shows the data from the previous analysis run.

2.3.9. Digital Signatures

To sign the artifacts created by the `package` goal, one needs to run the `gpg:sign` goal. The resulting signatures accompany the files in the `target` directory.

2.3.10. Distribution

To create the archived distributions we offer for download at our website, simply run the `assembly:single` goal. Its output can be found in the `target` directory as usually.

2.3.11. Transformation of Scenarios

It is possible to automatically transform scenarios from previous versions of PerfCake into the newest one. There are XSTL stylesheets included and they can be used by invoking the `xml:transform` goal and specific profile (see below).

There are properties that can be used to control the transformation. They are described in the following table.

It is currently possible to automatically migrate from version 2 to 3, and from version 4 to 5. The Maven profiles are correspondingly named `2-to-3`, and `4-to-5`. The migration is started by invoking:

```
$ mvn xml:transform -P 2-to-3 -Dtransform.scenarios.dir=<source
  scenarios dir> \
  -Dtransform.scenarios.outputDir=<target scenarios dir>
```

Both directories must exist before starting the migration. All XML scenarios found in the directories are transformed.

Property name	Description	Required	Default value
<code>transform.scenarios.dir</code>	An input directory where the XML plugin will look for the scenarios to transform.	Yes	-
<code>transform.scenarios.outputDir</code>	An output directory where the transformed scenarios will be placed.	No	<code>\${project.build.directory}/scenarios</code>

Table 2.1. XML plugin properties

2.4. Coding Standards

This section describes coding standards used for the PerfCake project. The detailed guidelines are based on Google Java Coding Standard ¹ with some changes applied. For a brief overview, please make sure to:

- Develop tests for your features/fixes (keep the high level of test coverage),
- Use the appropriate code style and formatting (Eclipse configuration file is present in the repo),
- Avoid introducing new FindBugs warnings (see Developers' Guide to find out how to generate the site report),
- Keep backward compatibility unless previously discussed with the developers,
- Write/update the JavaDoc comments,
- Avoid bad practices ²,
- You do not keep unused imports, FIXME comments, unused variables, cryptic code or anything ugly,
- Submit only a masterpiece code that you could be proud of.

¹ <http://google-styleguide.googlecode.com/svn/trunk/javaguide.html>

² <http://blog.codinghorror.com/new-programming-jargon/>

Following is the complete definition of PerfCake's coding standards for source code in the Java™ Programming Language. A Java source file is described as being in PerfCake Style if and only if it adheres to the rules herein.

Like other programming style guides, the issues covered span not only aesthetic issues of formatting, but other types of conventions or coding standards as well. However, this document focuses primarily on the hard-and-fast rules that we follow universally, and avoids giving advice that isn't clearly enforceable (whether by human or tool).

In this document, unless otherwise clarified:

1. The term *class* is used inclusively to mean an "ordinary" class, enum class, interface or annotation type (`@interface`),
2. The term *comment* always refers to implementation comments. We do not use the phrase "documentation comments", instead using the common term "Javadoc."

Example code in this document is non-normative. That is, while the examples are in PerfCake Style, they may not illustrate the only stylish way to represent the code. Optional formatting choices made in examples should not be enforced as rules.

Previous four paragraphs are copied from the Google Java Coding Standard ¹ as well as the rest of this section.

2.4.1. Source file basics

File name

The source file name consists of the case-sensitive name of the top-level class it contains, plus the `.java` extension.

File encoding: UTF-8

Source files are encoded in UTF-8.

Special characters

Whitespace characters

Aside from the line terminator sequence, the **ASCII horizontal space character (0x20)** is the only whitespace character that appears anywhere in a source file. This implies that:

1. All other whitespace characters in string and character literals are escaped,
2. Tab characters are not used for indentation.

Special escape sequences

For any character that has a special escape sequence (`\b`, `\t`, `\n`, `\f`, `\r`, `\"`, `\'` and `\\`), that sequence is used rather than the corresponding octal (e.g. `\012`) or Unicode (e.g. `\u000a`) escape.

Non-ASCII characters

For the remaining non-ASCII characters, either the actual Unicode character (e.g. `∞`) or the equivalent Unicode escape (e.g. `\u221e`) is used, depending only on which makes the code **easier to read and understand**.

Tip

In the Unicode escape case, and occasionally even when actual Unicode characters are used, an explanatory comment can be very helpful.

Example	Discussion
<code>String unitAbbrev = "µs";</code>	Best: perfectly clear even without a comment.
<code>// "µs" String unitAbbrev = "\u03bc";</code>	Allowed, but there's no reason to do this.
<code>// Greek letter mu, "s" String unitAbbrev = "\u03bc";</code>	Allowed, but awkward and prone to mistakes.
<code>String unitAbbrev = "\u03bc";</code>	Poor: the reader has no idea what this is.
<code>// byte order mark return '\uffff' + content;</code>	Good: use escapes for non-printable characters, and comment if necessary.

Table 2.2. Special characters examples

Tip

Never make your code less readable simply out of fear that some programs might not handle non-ASCII characters properly. If that should happen, those programs are **broken** and they must be **fixed**.

2.4.2. Source file structure

A source file consists of, **in order**:

1. License or copyright information, if present,
2. Package statement,
3. Import statements,
4. Exactly one top-level class.

Exactly one blank line separates each section that is present.

License or copyright information, if present

If license or copyright information belongs in a file, it belongs here.

Package statement

The package statement is **not line-wrapped**. The column limit (the section called "Column limit: 400") does not apply to package statements.

Import statements

No wildcard imports

Wildcard imports, static or otherwise, **are not used**.

No line-wrapping

Import statements are **not line-wrapped**. The column limit (the section called “Column limit: 400”) does not apply to import statements.

Ordering and spacing

Import statements are divided into the following groups, in this order, with each group separated by a single blank line:

1. All static imports in a single group
2. `org.perfcake` imports (only if this source file is in the `org.perfcake` package space)
3. Third-party imports, one group per top-level package, in ASCII sort order
 - for example: com, org, junit, sun
4. `java` imports
5. `javax` imports

Within a group there are no blank lines, and the imported names appear in ASCII sort order. (**Note:** this is not the same as the import *statements* being in ASCII sort order; the presence of semicolons warps the result.)

Class declaration

Exactly one top-level class declaration

Each top-level class resides in a source file of its own.

Class member ordering

The ordering of the members of a class can have a great effect on learnability, but there is no single correct recipe for how to do it. Different classes may order their members differently.

What is important is that each class order its members in **some logical order**, which its maintainer could explain if asked. For example, new methods are not just habitually added to the end of the class, as that would yield "chronological by date added" ordering, which is not a logical ordering.

Overloads: never split

When a class has multiple constructors, or multiple methods with the same name, these appear sequentially, with no intervening members.

2.4.3. Formating

Note

Terminology Note: *block-like construct* refers to the body of a class, method or constructor. Note that, by the section called “Arrays”, any array initializer *may* optionally be treated as if it were a block-like construct.

Braces

Braces are used where optional

Braces are used with `if`, `else`, `for`, `do` and `while` statements, even when the body is empty or contains only a single statement.

Nonempty blocks: K & R style

Braces follow the Kernighan and Ritchie style ("Egyptian brackets") for *nonempty* blocks and block-like constructs:

- No line break before the opening brace,
- Line break after the opening brace,
- Line break before the closing brace
- Line break after the closing brace *if* that brace terminates a statement or the body of a method, constructor or *named* class. For example, there is *no* line break after the brace if it is followed by `else` or a comma.

Example:

```
return new MyClass() {
    @Override public void method() {
        if (condition()) {
            try {
                something();
            } catch (ProblemException e) {
                recover();
            }
        }
    }
};
```

A few exceptions for enum classes are given in the section called "Enum classes".

Empty blocks: may be concise

An empty block or block-like construct *may* be closed immediately after it is opened, with no characters or line break in between (`{ }`), **unless** it is part of a *multi-block statement* (one that directly contains multiple blocks: `if/else-if/else` or `try/catch/finally`).

Example:

```
void doNothing() {}
```

Block indentation: +3 spaces

Each time a new block or block-like construct is opened, the indent increases by two spaces. When the block ends, the indent returns to the previous indent level. The indent level applies to both code and comments throughout the block. (See the example in the section called "Nonempty blocks: K & R style".)

One statement per line

Each statement is followed by a line-break.

Column limit: 400

PerfCake uses a column limit of 400 characters. Except as noted below, any line that would exceed this limit must be line-wrapped, as explained in the section called “Line-wrapping”.

Line-wrapping

Terminology Note: When code that might otherwise legally occupy a single line is divided into multiple lines, typically to avoid overflowing the column limit, this activity is called *line-wrapping*.

There is no comprehensive, deterministic formula showing *exactly* how to line-wrap in every situation. Very often there are several valid ways to line-wrap the same piece of code.

Tip

Extracting a method or local variable may solve the problem without the need to line-wrap.

Where to break

The prime directive of line-wrapping is: prefer to break at a **higher syntactic level**. Also:

1. When a line is broken at a *non-assignment* operator the break comes *before* the symbol. (Note that this is not the same practice used in Google style for other languages, such as C++ and JavaScript.)
 - This also applies to the following "operator-like" symbols: the dot separator (`.`), the ampersand in type bounds (`<T extends Foo & Bar>`), and the pipe in catch blocks (`catch (FooException | BarException e)`).
2. When a line is broken at an *assignment* operator the break typically comes *after* the symbol, but either way is acceptable.
 - This also applies to the "assignment-operator-like" colon in an enhanced `for` ("foreach") statement.
3. A method or constructor name stays attached to the open parenthesis (`()`) that follows it.
4. A comma (`,`) stays attached to the token that precedes it.

Indent continuation lines at least +6 spaces

When line-wrapping, each line after the first (each *continuation line*) is indented at least +6 from the original line.

When there are multiple continuation lines, indentation may be varied beyond +6 as desired. In general, two continuation lines use the same indentation level if and only if they begin with syntactically parallel elements.

the section called “Horizontal alignment: never required” addresses the discouraged practice of using a variable number of spaces to align certain tokens with previous lines.

Whitespace

Vertical whitespace

A single blank line appears:

1. *Between* consecutive members (or initializers) of a class: fields, constructors, methods, nested classes, static initializers, instance initializers.
 - **Exception:** A blank line between two consecutive fields (having no other code between them) is optional. Such blank lines are used as needed to create *logical groupings* of fields.
2. Within method bodies, as needed to create *logical groupings* of statements.
3. *Optionally* before the first member or after the last member of the class (neither encouraged nor discouraged).
4. As required by other sections of this document (such as the section called “Import statements”).

Multiple consecutive blank lines are permitted, but never required (or encouraged).

Horizontal whitespace

Beyond where required by the language or other style rules, and apart from literals, comments and Javadoc, a single ASCII space also appears in the following places **only**.

1. Separating any reserved word, such as `if`, `for` or `catch`, from an open parenthesis (`(`) that follows it on that line.
2. Separating any reserved word, such as `else` or `catch`, from a closing curly brace (`)`) that precedes it on that line.
3. Before any open curly brace (`{`) , with two exceptions:
 - `@SomeAnnotation({a, b})` (no space is used)
 - `String[][] x = {{"foo"}};` (no space is required between `{` , by item 8 below)
4. On both sides of any binary or ternary operator. This also applies to the following "operator-like" symbols:
 - the ampersand in a conjunctive type bound: `<T extends Foo & Bar>`
 - the pipe for a catch block that handles multiple exceptions: `catch (IOException | BarException e)`
 - the colon (`:`) in an enhanced `for` ("foreach") statement
5. After `,` `;` or the closing parenthesis (`)`) of a cast
6. On both sides of the double slash (`//`) that begins an end-of-line comment. Here, multiple spaces are allowed, but not required
7. Between the type and variable of a declaration: `List<String> list`
8. *Optional* just inside both braces of an array initializer
 - `new int[] {5, 6}` and `new int[] { 5, 6 }` are both valid

Note

This rule never requires or forbids additional space at the start or end of a line, only interior space.

Horizontal alignment: never required

Terminology Note: *Horizontal alignment* is the practice of adding a variable number of additional spaces in your code with the goal of making certain tokens appear directly below certain other tokens on previous lines.

This practice is permitted, but is **never required** by PerfCake Style. It is not even required to *maintain* horizontal alignment in places where it was already used. Here is an example without alignment, then using alignment:

```
private int x; // this is fine
private Color color; // this too

private int x; // permitted, but future edits
private Color color; // may leave it unaligned
```

Tip

Alignment can aid readability, but it creates problems for future maintenance. Consider a future change that needs to touch just one line. This change may leave the formerly-pleasing formatting mangled, and that is **allowed**. More often it prompts the coder (perhaps you) to adjust whitespace on nearby lines as well, possibly triggering a cascading series of reformatting. That one-line change now has a "blast radius." This can at worst result in pointless busywork, but at best it still corrupts version history information, slows down reviewers and exacerbates merge conflicts.

Grouping parentheses: recommended

Optional grouping parentheses are omitted only when author and reviewer agree that there is no reasonable chance the code will be misinterpreted without them, nor would they have made the code easier to read. It is not reasonable to assume that every reader has the entire Java operator precedence table memorized.

Specific constructs

Enum classes

After each comma that follows an enum constant, a line-break is optional.

An enum class with no methods and no documentation on its constants may optionally be formatted as if it were an array initializer (see the section called "Arrays").

```
private enum Suit { CLUBS, HEARTS, SPADES, DIAMONDS }
```

Since enum classes *are classes*, all other rules for formatting classes apply.

Variable declarations

- **One variable per declaration**

Every variable declaration (field or local) declares only one variable: declarations such as `int a, b;` are not used.

- **Declared when needed, initialized as soon as possible**

Local variables are **not** habitually declared at the start of their containing block or block-like construct. Instead, local variables are declared close to the point they are first used (within reason), to minimize

their scope. Local variable declarations typically have initializers, or are initialized immediately after declaration.

Arrays

- **Array initializers: can be "block-like"**

Any array initializer may optionally be formatted as if it were a "block-like construct." For example, the following are all valid (not an exhaustive list):

```
new int[] {          new int[] {
    0, 1, 2, 3      0,
}                  1,
                  2,
                  3,
new int[] {          }
    0, 1,          new int[]
    2, 3          {0, 1, 2, 3}
}                }
```

- **No C-style array declarations**

The square brackets form a part of the type, not the variable: `String[] args, notString args[]`.

Switch statements

Terminology Note: Inside the braces of a *switch block* are one or more *statement groups*. Each statement group consists of one or more *switch labels* (either `case FOO: or default:`), followed by one or more statements.

- **Indentation**

As with any other block, the contents of a switch block are indented +3.

After a switch label, a newline appears, and the indentation level is increased +3, exactly as if a block were being opened. The following switch label returns to the previous indentation level, as if a block had been closed.

- **Fall-through: commented**

Within a switch block, each statement group either terminates abruptly (with `abreak, continue, return` or thrown exception), or is marked with a comment to indicate that execution will or *might* continue into the next statement group. Any comment that communicates the idea of fall-through is sufficient (typically `// fall through`). This special comment is not required in the last statement group of the switch block. Example:

```
switch (input) {
    case 1:
    case 2:
        prepareOneOrTwo();
        // fall through
    case 3:
        handleOneTwoOrThree();
        break;
    default:
        handleLargeNumber(input);
}
```



```
}
```

- **The default case is present**

Each switch statement includes a `default` statement group, even if it contains no code.

Annotations

Annotations applying to a class, method or constructor appear immediately after the documentation block, and each annotation is listed on a line of its own (that is, one annotation per line). These line breaks do not constitute line-wrapping (the section called “Line-wrapping”), so the indentation level is not increased. Example:

```
@Override
@Nullable
public String getNameIfPresent() { ... }
```

Exception: A single parameterless annotation may instead appear together with the first line of the signature, for example:

```
@Override public int hashCode() { ... }
```

Annotations applying to a field also appear immediately after the documentation block, but in this case, *multiple* annotations (possibly parameterized) may be listed on the same line; for example:

```
@Partial @Mock DataLoader loader;
```

There are no specific rules for formatting parameter and local variable annotations.

Comments

- **Block comment style**

Block comments are indented at the same level as the surrounding code. They may be in `/* ... */` style or `// ...` style. For multi-line `/* ... */` comments, subsequent lines must start with `*` aligned with the `*` on the previous line.

```
/*
 * This is           // And so           /* Or you can
 * okay.             // is this.         * even do this. */
 */
```

Comments are not enclosed in boxes drawn with asterisks or other characters.

Tip

When writing multi-line comments, use the `/* ... */` style if you want automatic code formatters to re-wrap the lines when necessary (paragraph-style). Most formatters don't re-wrap lines in `// ...` style comment blocks.

Modifiers

Class and member modifiers, when present, appear in the order recommended by the Java Language Specification:

```
public protected private abstract static final transient
volatile synchronized native strictfp
```

Numeric literals

long-valued integer literals use an uppercase `L` suffix, never lowercase (to avoid confusion with the digit 1). For example, `3000000000L` rather than `3000000000l`.

It is advised to use the numeric literal underscore separator (`_`) as it comes with Java 7. This is even better for readability: `3_000_000_000L`.

2.4.4. Naming

Rules common to all identifiers

Identifiers use only ASCII letters and digits, and in two cases noted below, underscores. Thus each valid identifier name is matched by the regular expression `\w+`.

In PerfCake Style special prefixes or suffixes, like those seen in the examples `name_`, `mName`, `s_name` and `kName`, are **not** used.

Rules by identifier type

Package names

Package names are all lowercase, singular, with consecutive words simply concatenated together (no underscores). For example, `com.example.deepspace`, not `com.example.deepSpace` or `com.example.deep_space`.

Class names

Class names are written in UpperCamelCase (the section called “Camel case: defined”).

Class names are typically nouns or noun phrases. For example, `Character` or `ImmutableList`. Interface names may also be nouns or noun phrases (for example, `List`), but may sometimes be adjectives or adjective phrases instead (for example, `Readable`).

There are no specific rules or even well-established conventions for naming annotation types.

Test classes are named starting with the name of the class they are testing, and ending with `Test`. For example, `HashTest` or `HashIntegrationTest`.

Method names

Method names are written in lowerCamelCase (the section called “Camel case: defined”).

Method names are typically verbs or verb phrases. For example, `sendMessage` or `stop`.

Underscores may appear in JUnit test method names to separate logical components of the name. One typical pattern is `test<MethodUnderTest>_<state>`, for example `testPop_emptyStack`. There is no **one correct way** to name test methods.

Constant names

Constant names use `CONSTANT_CASE`: all uppercase letters, with words separated by underscores. But what *is* a constant, exactly?

Every constant is a static final field, but not all static final fields are constants. Before choosing constant case, consider whether the field *really feels* like a constant. For example, if any of that instance's observable state can change, it is almost certainly not a constant. Merely *intending* to never mutate the object is generally not enough.

Examples:

```
// Constants
static final int NUMBER = 5;
static final ImmutableList<String> NAMES =
    ImmutableList.of("Ed", "Ann");

// because Joiner is immutable
static final Joiner COMMA_JOINER = Joiner.on(', ');
static final SomeMutableType[] EMPTY_ARRAY = {};
enum SomeEnum { ENUM_CONSTANT }

// Not constants
static String nonFinal = "non-final";
final String nonStatic = "non-static";
static final Set<String> mutableCollection = new HashSet<String>();
static final ImmutableSet<SomeMutableType> mutableElements =
    ImmutableSet.of(mutable);
static final Logger logger = Logger.getLogger(MyClass.getName());
static final String[] nonEmptyArray = {"these", "can", "change"};
```

These names are typically nouns or noun phrases.

Non-constant field names

Non-constant field names (static or otherwise) are written in lowerCamelCase (the section called “Camel case: defined”).

These names are typically nouns or noun phrases. For example, `computedValues` or `index`.

Parameter names

Parameter names are written in lowerCamelCase (the section called “Camel case: defined”).

One-character parameter names should be avoided.

Exception parameter names

Parameters in `catch` clauses of exceptions can use one-character names.

Local variable names

Local variable names are written in lowerCamelCase (the section called “Camel case: defined”), and can be abbreviated more liberally than other types of names.

However, one-character names should be avoided, except for temporary and looping variables.

Even when final and immutable, local variables are not considered to be constants, and should not be styled as constants.

Type variable names

Each type variable is named in one of two styles:

- A single capital letter, optionally followed by a single numeral (such as E,T,X,T2).
- A name in the form used for classes (see Class names above), followed by the capital letter T (examples:RequestT,FooBarT).

Camel case: defined

Sometimes there is more than one reasonable way to convert an English phrase into camel case, such as when acronyms or unusual constructs like "IPv6" or "iOS" are present. To improve predictability, Google Style specifies the following (nearly) deterministic scheme.

Beginning with the prose form of the name:

1. Convert the phrase to plain ASCII and remove any apostrophes. For example, "Müller's algorithm" might become "Muellers algorithm".
2. Divide this result into words, splitting on spaces and any remaining punctuation (typically hyphens).
 - *Recommended:* if any word already has a conventional camel-case appearance in common usage, split this into its constituent parts (e.g., "AdWords" becomes "ad words"). Note that a word such as "iOS" is not really in camel case *per se*; it defies *any* convention, so this recommendation does not apply.
3. Now lowercase *everything* (including acronyms), then uppercase only the first character of:
 - ... each word, to yield upper camel case, or
 - ... each word except the first, to yield lower camel case.
4. Finally, join all the words into a single identifier.

Note that the casing of the original words is almost entirely disregarded. Examples:

Prose form	Correct	Incorrect
"XML HTTP request"	XmlHttpRequest	XMLHTTPRequest
"new customer ID"	newCustomerId	newCustomerID
"inner stopwatch"	innerStopwatch	innerStopWatch
"supports IPv6 on iOS?"	supportsIpv6OnIos	supportsIPv6OnIOS
"YouTube importer"	YouTubeImporter, YoutubeIm- porter*	

Table 2.3. Camel case examples

*Acceptable, but not recommended.

Note

Some words are ambiguously hyphenated in the English language: for example "nonempty" and "non-empty" are both correct, so the method names `checkNonempty` and `checkNonEmpty` are likewise both correct.

2.4.5. Programming practices

@Override: always used

A method is marked with the `@Override` annotation whenever it is legal. This includes a class method overriding a superclass method, a class method implementing an interface method, and an interface method respecifying a superinterface method.

Exception: `@Override` may be omitted when the parent method is `@Deprecated`.

Caught exceptions: not ignored

Except as noted below, it is very rarely correct to do nothing in response to a caught exception. Typical responses are to log it, or if it is considered "impossible", rethrow it as an `IllegalStateException`.

When it truly is appropriate to take no action whatsoever in a catch block, the reason this is justified is explained in a comment.

```
try {
    int i = Integer.parseInt(response);
    return handleNumericResponse(i);
} catch (NumberFormatException ok) {
    // it's not numeric; that's fine, just continue
}
return handleTextResponse(response);
```

Exception: In tests, a caught exception may be ignored without comment if it is named expected. The following is a very common idiom for ensuring that the method under test does throw an exception of the expected type, so a comment is unnecessary here.

```
try {
    emptyStack.pop();
    fail();
} catch (NoSuchElementException expected) {
}
```

Static members: qualified using class

When a reference to a static class member must be qualified, it is qualified with that class's name, not with a reference or expression of that class's type.

```
Foo aFoo = ...;
Foo.aStaticMethod(); // good
aFoo.aStaticMethod(); // bad
somethingThatYieldsAFoo().aStaticMethod(); // very bad
```

Finalizers: not used

It is **extremely rare** to override `Object.finalize`.

Tip

Don't do it. If you absolutely must, first read and understand *Effective Java* [<http://books.google.com/books?isbn=8131726592>] Item 7, "Avoid Finalizers," very carefully, and then don't do it.

2.4.6. JavaDoc

Formatting

General form

The *basic* formatting of Javadoc blocks is as seen in this example:

```
/**
 * Multiple lines of Javadoc text are written here,
 * wrapped normally...
 */
public int method(String p1) { ... }
```

... or in this single-line example:

```
/** An especially short bit of Javadoc. */
```

The basic form is always acceptable. The single-line form may be substituted when there are no at-clauses present, and the entirety of the Javadoc block (including comment markers) can fit on a single line.

Paragraphs

One blank line -- that is, a line containing only the aligned leading asterisk (*) -- appears between paragraphs, and before the group of "at-clauses" if present. Each paragraph but the first has <p> immediately before the first word, with no space after.

At-clauses

Any of the standard "at-clauses" that are used appear in the order `@param`, `@return`, `@throws`, `@deprecated`, and these four types never appear with an empty description. When an at-clause doesn't fit on a single line, continuation lines are indented **six** (or more) spaces from the position of the `@`.

Language

Use the third person in describing class purpose, method actions, parameters, return types, exceptions and all others. Usually, present tense should be used. All sentences including those describing parameters descriptions, thrown exceptions, and return types start with an uppercase letter and end with a full stop.

Avoid using reference to the item being described like *this class*, *the purpose of this method*, *it stores*, etc. Also avoid obvious verbs including *used to*, *returns*, etc. All these references are very obvious in the resulting JavaDoc. Simply describe the immediate actions, purpose and all tohers. The same applies to exceptions being thrown.

Methods intended for fluent API returning `this` should describe the return value as *Instance of this to support fluent API*.

Following is an example of JavaDoc with the proper language:

```
/**
 * Gets a value of an accumulated result.
 *
 * @param key
```

```

*      Key in the results hash map.
* @return The value associated with the given key.
*/
protected Object getAccumulatedResult(final String key) {
    ...
}

```

The summary fragment

The Javadoc for each class and member begins with a brief **summary fragment**. This fragment is very important: it is the only part of the text that appears in certain contexts such as class and method indexes.

This is a fragment -- a noun phrase or verb phrase, not a complete sentence. It does not begin with `Foo` is a..., or `This method returns...`, nor does it form a complete imperative sentence like `Save the record..` However, the fragment is capitalized and punctuated as if it were a complete sentence.

Tip

A common mistake is to write simple Javadoc in the form `/** @return the customer ID */`. This is incorrect, and should be changed to

```

/**
 * Gets the customer ID.
 * @return The customer ID.
 */

```

All of the sentences should be properly ended by a period including the sentences following "at-clauses".

Where Javadoc is used

At the *minimum*, Javadoc is present for every `public` class, and every `public` or `protected` member of such a class, with a few exceptions noted below.

Other classes and members still have Javadoc *as needed*. Whenever an implementation comment would be used to define the overall purpose or behavior of a class, method or field, that comment is written as Javadoc instead (it's more uniform, and more tool-friendly.)

Exception: self-explanatory methods

Javadoc is optional for "simple, obvious" methods like `getFoo`, in cases where there *really and truly* is nothing else worthwhile to say but "Returns the foo".

Important

It is not appropriate to cite this exception to justify omitting relevant information that a typical reader might need to know. For example, for a method named `getCanonicalName`, don't omit its documentation (with the rationale that it would say only `/** Returns the canonical name. */`) if a typical reader may have no idea what the term "canonical name" means!

Exception: overrides

Javadoc is not always present on a method that overrides a supertype method.

2.5. Test Development

All classes in PerfCake are supposed to have a good test coverage. This might not currently be the situation for all of them but it definitely is our goal. When developing new code, please make sure the tests are developed as well.

There are the following test groups defined. Each of the test methods or classes should be categorized at least into one of them.

- *unit* - Test of a single component (class).
- *integration* - Tests of multiple components working well in the complete context of PerfCake and in relation to other components.
- *performance* - Tests of a performance of a component or multiple components to make sure they are not a bottle-neck.
- *stress* - Tests to verify that a component or multiple components work correctly under a heavy load.
- *ueber* - Advanced integration/performance/stress tests that verify components at larger scale than previous groups and take significant amount of time. Tests in this group are not executed by default, unless a Maven profile *allTests* is used.

To find out what is the current code coverage of tests, refer to the Section 2.3.7, “JaCoCo Code Coverage” .

2.6. Writing Guides

This section describes guidelines to writing PerfCake guides. It contains information on styles used, language, and good practices.

The documentation is written using Doctype which with all its limitations has been proven as the most suitable for generating both PDF and HTML documentation. We receive support from oXygen in the form of free licenses for oXygen XML editor which facilitates authoring.

The documentation is separated into two books. First, the Users' Guide is intended for general PerfCake users, while the second, the Developers' Guide is for more advanced users willing to extend PerfCake, work with its source code or to make direct contributions.

There is not much to say about it, as the current document structure and XML elements used are a leading example of how to write the documentation. We would like to kindly ask any contributors to stick to the current format.

The documentation is stored in a separate repository on GitHub (<https://github.com/PerfCake/Doc>). The main authoring happens in the *master* branch and a new branch is created for each major release. We do not use tags as we want to keep the option to fix any issues even after the release. However, given the limited resources, this happens only rarely. The documentation is valid for just the latest minor release in the given branch.

Chapter 3. PerfCake Architecture

In this chapter we describe the inner architecture of PerfCake. First we inspect the overall design and then we delve deeper into the individual parts.

There is an easy concept that is good to bear in mind while working with PerfCake -- a single communication unit called a Message . PerfCake usually sends the message to the target system and measures the response time needed by the system being measured to provide a valid response. It is also the basic unit of the load that can be generated for the target system.

It is crucial to understand the inner architecture when developing custom components. The lack of this knowledge can lead to wrong measurements and invalid performance results.

Let's investigate the architecture in more details.

3.1. PerfCake Architecture Overview

Let's start with a Figure that is worth a thousand words.

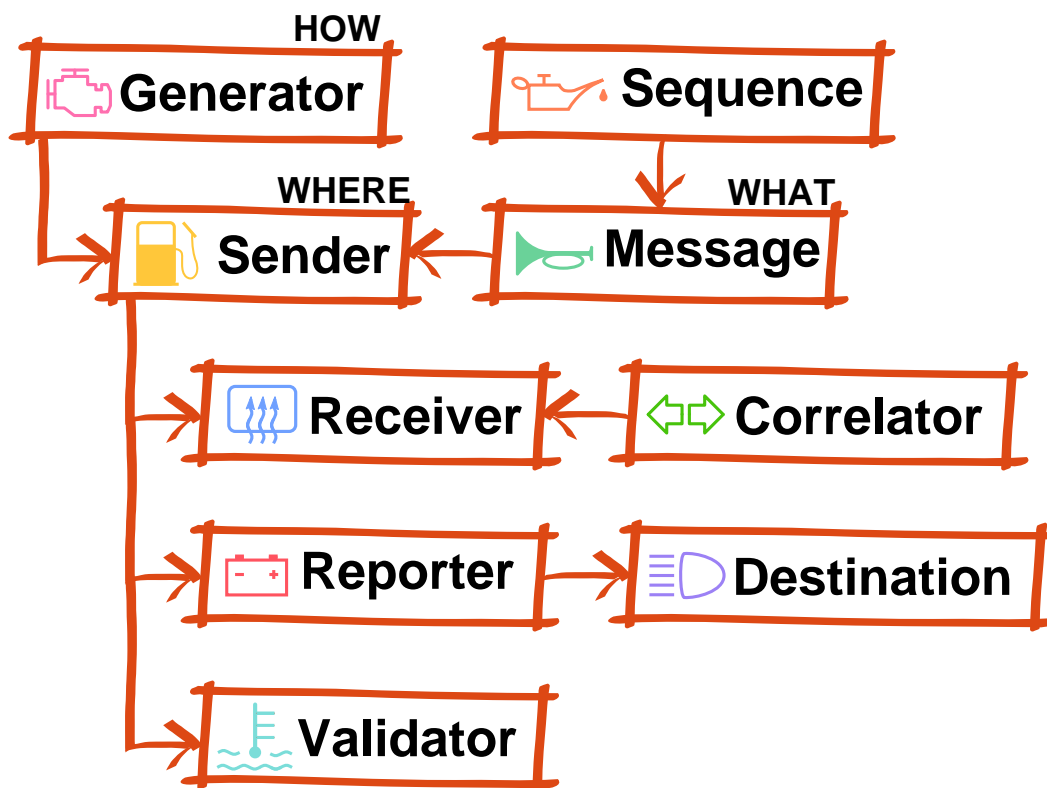


Figure 3.1. Architecture Overview

In the Figure 3.1, “Architecture Overview” , we can see the high level overview of PerfCake's architecture. There is always a single `Generator` that works like an *engine* in the performance test. The main purpose of the `Generator` is to specify how the messages are generated. The easiest case would be to send a message to the target system, wait for the response and measure the response time. However, this would

not tell us anything about performance of the target system. What is more interesting is a load generated in many parallel threads as fast as possible.

The default generator implementation (`DefaultMessageGenerator`) has a queue of messages ready to be send by a `Sender` to the target system. More details about `Generator` architecture can be found in the next section. For now, just remember that `Generator` specifies *HOW* the messages are sent.

A `Sender` represents a protocol specific "*pump*" of message to a target service or system under test. The protocols can be HTTP, REST, JMS, JDBC, SOAP, socket, file etc. The `Sender` is configured with a specific address for the given protocol. So the `Sender` tells *WHERE TO* send the messages.

A `Message` is the content of the smallest unit of load that is sent to the target system. So basically it says *WHAT* is sent.

For the ability to have different `Message` each time it is sent or to fill in some dynamic values, a sophisticated templating engine is used. Each message can be enriched ("*oiled*") with dynamic values. To provide the dynamic values, we can use a `Sequence`. This is a simple interface that returns another value in the row each time it is called.

Optionally, a response to the original request can be received through a separate message channel. This is where `Receivers` come at hand. A `Receiver` manages an "*inflow*" of responses to the original requests and passes them to a `Correlator`. The `Correlator` then matches the responses to the original requests based on some specific information (i.e. *correlation ID*) in both of the messages. A complete request-response cycle is then being measured.

The procedure of sending the messages is carefully monitored by the reporting facility of PerfCake. The metrics are implemented using `Reporters`. A `Reporter` accumulates single measurements of individual requests into meaningful values (e.g. throughput, memory usage, response time, service time, response time histogram, etc.) and waits for them to be "*discharged*" at specified intervals into a `Destination`. The `Destination` specifies where the measured results are stored (e.g. chart, CSV file, log file, database, etc.).

Finally, there are validators that prove the responses to be valid. Some system can start responding very fast under a heavy load, but just with a blunt overload warning. To prevent any such failure, a `Validator` can valide its content.

More details about individual parts of the application can be found in the later sections.

3.2. Run Info

`RunInfo` is a central object that controls the run of the performance test. It is not intended to be inherited nor extended. It is just a central piece that tells us when the test started, for how long it runs, when it should finish and how many iteration have already passed since the test start.

`RunInfo` typically originates in the scenario definition. The scenario can specify the length of the performance test in either a time unit (milliseconds) or number of iterations (how many messages should be sent).

`RunInfo` is passed to many other objects in PerfCake but it is not supposed to be modified. It is a good practice to use it just for obtaining information about the running test by using its getters.

3.3. Generators

In this section we will reveal as much details about message generators as possible. First we describe the architecture and then we discuss an approach to develop a new generator.

Generator is the most sensitive and fragile component in the whole PerfCake architecture. It has the responsibility of generating all the messages and load. It is recommended to study the `MessageGenerator` interface, `AbstractMessageGenerator` as its basic implementation and then the default implementation called `DefaultMessageGenerator` before developing your own generator.

3.3.1. Generators Architecture

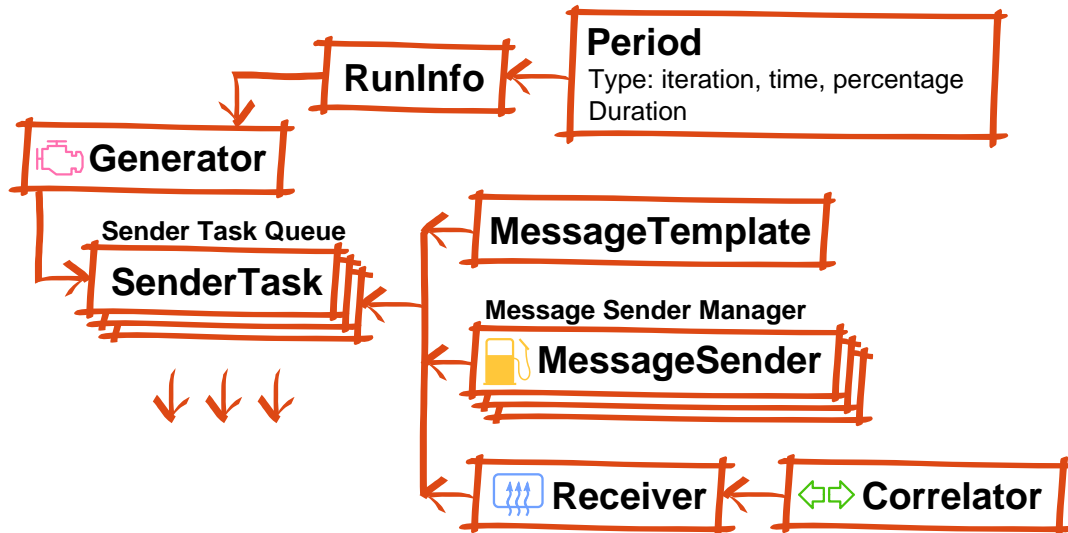


Figure 3.2. Generators Architecture

The main responsibility of the generator is creation of `SenderTask` instances while controlling the number of threads used and the speed of creation of these tasks. A generator also keeps a thread pool that executes the tasks. The tasks are then processed as fast as possible. There is nothing a generator could or should do about the speed of the `SenderTask` execution.

A message generator is the most crucial and complicated component of PerfCake and it is highly recommended to reuse one of existing implementations as they already offer mostly wanted features.

The message generator needs to take care of the sending threads, create `SenderTasks` as needed and monitor the test progress. It is important to properly shutdown the message generation for both time and iteration based test length control. In the case of an iteration based control, a generator must wait for all the tasks to be processed (in case of a normal/unexceptional termination). In the case of a time based control, the test stops immediately after the time has elapsed.

Each `SenderTask` takes a reference to its parent generator to notify this generator of any errors that might have occurred.

A message generator carries links to all other system components and thus has an ultimate control over the running performance test. It is the only class that indirectly manipulates `RunInfo` through starting and stopping the `ReportManager`.

A message generator usually maintains a queue of prepared `SenderTasks` and schedules their execution. It also controls the number of parallel threads running.

3.3.2. Writing a New Generator

The best way to implement a new generator is by modifying `DefaultMessageGenerator`. The main method is `generate()` that creates a new thread pool and generates `SenderTasks` until the test is finished. `SenderTasks` are submitted as tasks to the newly created thread pool. In the end the thread pool is shut down according to `RunInfo` configuration as described in the previous section.

It is worth noticing the custom thread factory `DefaultMessageGenerator.DaemonThreadFactory`. This makes sure we can quit the process even if some threads got stuck. It also sets higher priority to these threads.

`DefaultMessageGenerator` keeps an eye on the number of prepared `SenderTasks` by using a `BlockingQueue` that is passed to the underlying thread pool executor. This limits the size of memory used at once.

Now investigate the `AbstractMessageGenerator.newSenderTask()` method to see how `SenderTasks` are created. You can notice that `SenderTasks` constructor takes the generator to be able to report failures back. Other test execution related classes are set on the `SenderTask` as well for it to be able to complete its goal. A `SenderTask` instance implements `Runnable` and except for default Java API, there is no notification of its completion.

In the end just have a look to the `SenderTask` class. This class implements `Runnable` and does the following steps. First, it acquires a `MessageSender` from the senders pool, uses this `MessageSender` to send one or more messages while measuring the time it took. When a `Receiver` is used, it awaits for a message response on a separate message channel. Upon the response's arrival, the total time is measured. In the end, the `MessageSender` is released. When a `Receiver` is in place, the `MessageSender` is not returned to the pool until we get a response corresponding to the original request. This prevents another thread from using the same `MessageSender` and thus increasing the number of concurrent clients.

3.4. Message Senders

A `MessageSender` is the typical interface that most of the developers are likely to implement. It encapsulates the specific protocol communication. It does just one thing and it should do it properly. Implementing a simple sender can be really fast but there are some low hanging fruits that can make their development and usage easier. Let's start with their contract.

The ultimate goal of the `MessageSender` is to send a message (or any other unit of communication work), and possibly receive a response. Any implementation should not do anything but the communication. It should be a pure wrapper of the message exchange layer.

The `init()` and `close()` methods should be used to establish and close a permanent connection. It is a design consideration of any implementation whether to handle the connection establishment separately (and not measure it), or to open and close a connection with every single request (and make it part of the performance measurement). Most provided implementations (if not all) handle the connection separately as we are really interested only in measuring the message exchange.

The `preSend()` and `postSend()` methods are still not part of the performance measurement and can prepare the message for actual sending or handle any cleanup.

The `send()` methods must handle just the message exchange. No logging or complex error handling code should be placed here. Therefore we allow any generic exception to be thrown.

The messages must always be sent somewhere. This is specified through the `target` property.

In general, any of the configuration properties (including `target`) of the `MessageSender` can contain templates that get replaced. If you want your sender to support templates in any of the properties, always store them as a `StringTemplate` as in the `AbstractSender.setTarget()` method. Do not forget to render the resulting string each time it is used (if there are no other intentions) typically by using message attributes that are passed to many methods in the `MessageSender`.

TODO: How to develop a new sender, how to use inheritance from existing senders, how are senders used in a thread pool, are they thread safe?

To allow fluent API usage with senders, we strongly encourage you to make sure all your senders' setters return `this`.

It might be more convenient to extend `AbstractSender`. This class does some work for you already. First, it can cache a connection to the `target` so that it is not established separately for each message (see configuration property `keepConnection`). Second, it stores `target` as a `StringTemplate`. It also combines these two features together so that the `target` property can contain templates. However, replacing templates with message attributes only works when `keepConnection` is `false` because in the case of the cached connection, we do not reuse the `target` property.

When building your own `MessageSender` on top of the `AbstractSender` you just take care of the following methods.

In the `doInit()` method, you should establish the connection to the target system. It is advised to use `AbstractSender.safeGetTarget(messageAttributes)` call to obtain the target address with properly replaced templates.

The counterpart method is `doClose()`. You should close the previously created connection.

You can still use `preSend()` and `postSend()` methods to do any preparations and cleanup like creating the protocol specific version of the message. In this case, do not forget to call the methods in the ancestor as well (`super.preSend()` and `super.postSend()`).

Finally, the core part is the `doSend()` method where you just send the message, optionally returning a response if there was any expected.

Good examples of the described features are `JmsSender` and `JdbcSender` for instance, however these do not allow any other properties to carry templates.

The `HttpSender` on the other hand can use templates in the HTTP method name. But the connection is handled in a different way here as `URLConnection` is not reusable (Java handles its own cache internally).

If in doubt, you can use the `DummySender` in the debug mode and see what happens and what methods are being called depending on the configuration.

3.5. Receivers and Correlators

Receivers and *Correlators* are two optional components of a performance test scenario that enables us to receive response from a separate message channel. We can for instance send a request through a REST API and await for the response in the file system or in a database.

A *Receiver* has three mandatory properties. These are the number of concurrent `threads` that should be created to receive responses, the `correlator` to be used to match responses to requests, and the `source` from where to receive the responses. An instance of *Correlator* is also passed to the *Receiver* for it to be able to register the response.

It is a crucial responsibility of the `Receiver` to spawn the threads and establish communication channels. A `Receiver` must start the defined number threads to receive messages. These threads are later stopped with `Thread.interrupt()`. It is up to the receiver threads to react accordingly. The receiver threads must be executed as daemon threads and can be terminated at the end of the test execution if they do not react to the interruption.

During a performance test execution there is just a single instance of a `Receiver` created. For the developers convenience there is `AbstractReceiver`. For the most common situations where the `Receiver` simply creates a thread pool, there is `AbstractAutoSpawnReceiver`. A developer just needs to extend the `run()` method then. On the other hand, `HttpReceiver` is an example of a `Receiver` where the underlying framework did not allow us to spawn the threads ourself and manages the pool itself, thus it extends `AbstractReceiver`.

All received messages are passed to a `Correlator` which notifies the correct `SenderTask`. The `Correlator` interface defines two methods, first for the outbound requests (`registerRequest()`), and second for the inbound responses (`registerResponse()`). The `Correlator` then correlates requests with their responses and notifies `SenderTask` of receiving the appropriate response to the original request. This is done based on a *correlation ID* that is extracted from both request and response. Upon a successful match, `SenderTask.registerResponse(Serializable)` is called.

For performance reasons, all interface methods should be implemented thread safe without locking and or synchronization. All implementations should make sure that they do not keep eating up the memory and clean their data structures regularly.

For the developers convenience, there is `AbstractCorrelator` that takes care about matching the messages together. All one needs to implement are methods to extract the *correlation ID* from both the request (`getRequestCorrelationId()`) and the response (`getResponseCorrelationIds()`).

Please note the difference that a response can actually contain multiple *IDs*. The method for processing responses also takes a `MultiMap` instance with the message headers. This is because some protocols allow the same message header to be present multiple times (e.g. HTTP).

The `Correlator` does not necessarily need to have just a passive role. It can even add the *correlation ID* in the request if there is none yet. See `GenerateHeaderCorrelator` that can be used for many protocols.

It is possible that multiple requests will be aggregated in a single response. It is a task of a `Correlator` implementation to report all the aggregated responses. It is also possible that a single request will trigger multiple responses. Again, a specialized `Correlator` implementation can handle this situation and wait for all the parts to be received.

3.6. Sequences

Sequences can be used in any template string loaded from the scenario configuration. They are typically used to customize messages in a way that each message sent is unique.

A `Sequence` only implements two methods. First, `reset()` to reset the `Sequence` to its initial state, and second `publishNext()` to publish the next value(s) in the row to the provided properties. The `Sequences` are used heavily by many threads. Therefore they must be thread-safe and handle the load smart.

A wrong example is the `NumberSequence` which has the `publishNext()` method synchronized. This makes a significant overhead to the PerfCake performance.

Much better example is the `PrimitiveNumberSequence` which uses `AtomicLong` internally.

Each sequence can publish more values at once, each having its own unique key prefixed with the value from the `sequenceId` parameter of the `publishNext()` method.

3.7. Reporting

In this section we will reveal as much details about reporting facilities as possible. First we describe the architecture and then we discuss an approach to develop new reporters, destinations and accumulators.

Bear in mind that the reporting itself can have a significant influence on the system being measured. Be careful when extending this part of PerfCake.

3.7.1. Reporting Architecture

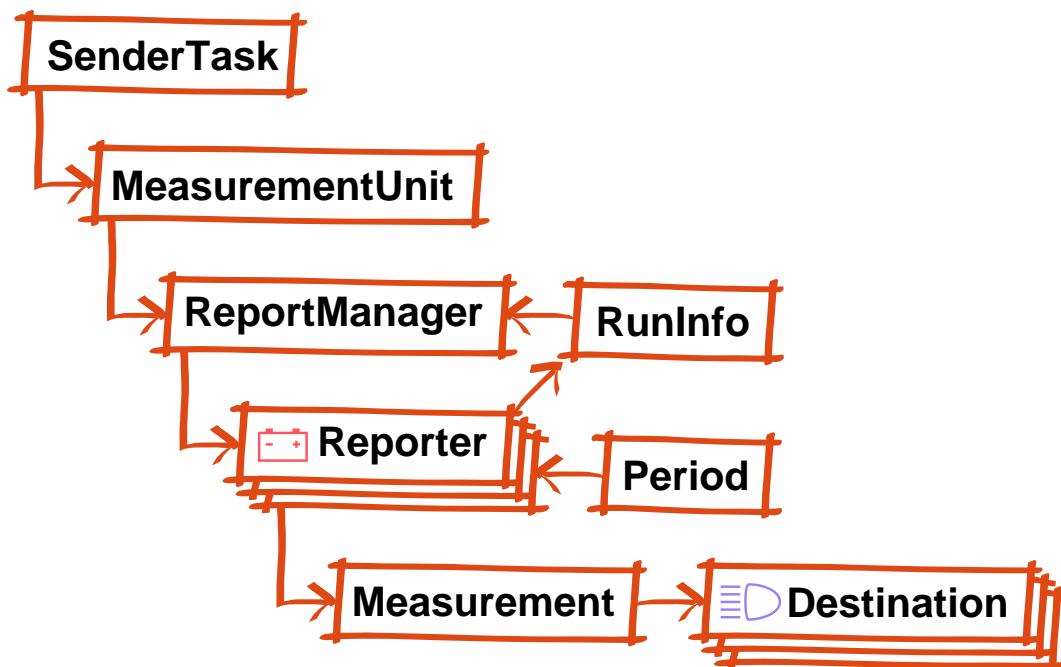


Figure 3.3. Reporting Architecture

The `SenderTask` instance measures the time needed to send a message by using a `MessageSender`. It creates a `MeasurementUnit` which is the basic unit carrying a single measurement. The information stored in the `MeasurementUnit` are mainly time values of the events in the process of sending a request.

All the `MeasurementUnits` are immediately reported to the `ReportManager` which in turn reports this unit to all its `Reporters`. A `Reporter` is supposed to process the value as it needs. The `Reporter` typically accumulates (by utilizing `Accumulators`) the values for later because not all `MeasurementUnits` are reported to the output (from practical reasons like the number of records and performance impacts).

When it is the right time for the `Reporter` to report the `Measurement` to the output (as specified in the scenario configuration by using the reporting `Period`), it must publish the results. It is up to the `Reporter` to make sure the results are reported at the right moments.

The `Reporter` is supposed to create a `Measurement` object carrying the accumulated results and pass it to all its `Destinations`.

The `Destination` is a representation of the place where the results should be reported. It can be a terminal console, a comma-separated values (CSV) file, a chart or any custom result repository.

3.7.2. Reporters

A `Reporter` takes multiple `MeasurementUnits` and combines them into a single `Measurement`. The core method is `report()` that is called each time a new `MeasurementUnit` is ready.

The `Reporter` should not report anything unless it has been started with the `start()` method. If it is properly started, it should regularly report to all registered `Destinations` depending on the configured reporting `Periods`.

The `Reporter` can assume that `RunInfo` has been set before its `start()` method was called for the first time.

It is the pure responsibility of the `Reporter` to publish `Measurement` results to the `Destinations` in the configured `Periods`. All `PeriodTypes` must be supported.

For easier development, it is advised to inherit from the `AbstractReporter` class which provides some common functionality including proper results publishing. One should directly implement this interface only when there is a serious reason. The `Reporter` must be thread safe as it is heavily used from multiple threads at the same time.

All the values reported in the `Measurement` should be accompanied by a unit. This is accomplished by providing the `Quantity` type.

A nice example of a very simple `Reporter` is `IterationsPerSecondReporter`.

The `AbstractReporter` can also automatically accumulate individual `MeasurementUnits`. It is just important that its `getAccumulator()` method returns the correct `Accumulator` for the given `MeasurementUnit` results map key. More on accumulator can be found in Section 3.7.4, “Accumulators”.

3.7.3. Destinations

A `Destination` is a channel to which performance measurement results can be reported. The `Destination` is registered with a `Reporter` and is completely controlled by the `Reporter`. The only responsibility of the `Destination` is to open a reporting channel, report `Measurements`, and close the reporting channel.

It is the role of the `Measurement` object to provide all the information to be reported (including value types, names, units and custom labels).

The core method of the `Destination` is `report()` and it needs to be thread-safe as it is used by multiple threads at the same time.

One of the simplest `Destinations` is `ConsoleDestination`.

3.7.4. Accumulators

An `Accumulator` is a tool for reporters to accumulate multiple values from `MeasurementUnits` into a single `Measurement`.

The `Accumulator` must be thread-safe as it is called from multiple threads at the same time.

It has three simple methods to reset the `Accumulator` to the default/empty state (`reset()`), to accumulate a new value (`add()`), and to obtain the current result (`getResult()`).

The `Accumulator` is not obliged to remember all the added values as long as it is capable of providing the correct results. E.g. while counting an average, it is sufficient to store the sum and the count of added values. In some cases, it might be necessary to store them all (e.g. harmonic mean).

3.8. Validators

In this section we will reveal as much details about validators as possible. First we describe the architecture and then we discuss an approach to develop new validators.

Please note that the process of validation can have a significant impact on the performance measurement. It is advised to use them only during the development of a performance test or to validate suspicious results.

3.8.1. Validators Architecture

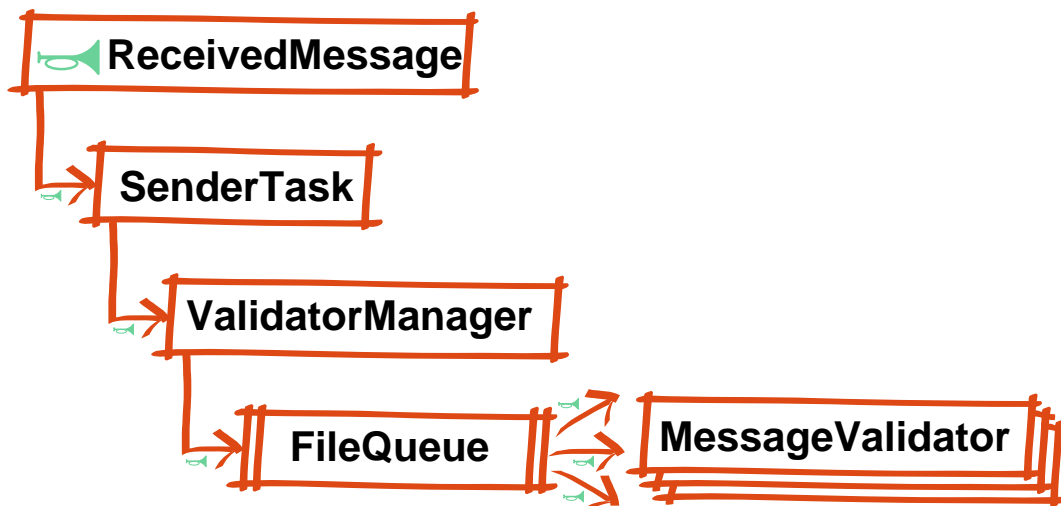


Figure 3.4. Validators Architecture

Similarly to reporting, validation is started from the `SenderTask`. A received response message is passed to the `ValidationManager` which stores them to a pipeline (i.e. `FileQueue`). Individual `MessageValidators` then consume the messages from this pipeline and count the correct and failed response messages.

The `MessageValidator` always receives the original message as well so it can see the particular request after any string templates were replaced with concrete values.

3.8.2. Writing a New Validator

The `MessageValidator` interface is the easiest to implement in PerfCake. It only has single method, it does not need to be thread-safe because it is always called from a single thread in parallel to the running test. It should not perform any resource demanding tasks.

By default, before the scenario execution has finished, there is only a single call to the `MessageValidator` every 500ms (unless configured otherwise). After that, the validation runs without no pauses.

The single method is `isValid()` and returns `true` on successful message validation. There is no common abstract ancestor and you are supposed to implement the interface directly.

Part II. Core Developers' Guide

This part is intended purely to core developers who control the project releases, configuration of 3rd party tools etc.

Table of Contents

4. Release Procedure	37
5. Continuous Integration	38

Chapter 4. Release Procedure

This chapter describes details about the release procedure using Maven and following the git flow principles. The target audience are core developers with appropriate access rights.

First, start off with a new release branch and let Maven prepare the release for us Figure 4.1, “Prepare a release branch”.

```
$ git checkout -b release/v{VERSION} devel
$ mvn release:prepare -Psign -Pproduction
```

Figure 4.1. Prepare a release branch

At this point, you should get the artifacts from the `target` directory for later publishing Figure 4.2, “Merge the changes to the devel branch”.

Never ever try to perform the release using the Maven release plugin. It cannot be configured to publish the artifacts and breaks the git-flow branching/tagging.

The rest is about getting git into a good shape. This starts by getting the updated `pom.xml` into the devel branch.

```
$ git checkout devel
$ git merge --no-ff release/v{VERSION}
```

Figure 4.2. Merge the changes to the devel branch

We need to get the correct `pom.xml` to the master branch as well. For this, we will use the commit prior to the head in the release branch Figure 4.3, “Merge the changes to the master branch as well”.

```
$ git checkout master
$ git merge --no-ff release/v{VERSION}~1
```

Figure 4.3. Merge the changes to the master branch as well

The last step is to clean everything up and go public Figure 4.4, “Merge the changes to the master branch as well”.

```
$ git branch -D release/v{VERSION}
$ git push --all && git push --tags
```

Figure 4.4. Merge the changes to the master branch as well

Only users with an approved account in the Sonatype JIRA ¹ can upload the artifacts. Then follow the rules specified in the Sonatype OSS Maven Repository Usage Guide ².

¹ <https://issues.sonatype.org/browse/OSSRH-7134>

² <http://goo.gl/xBSm4>

Chapter 5. Continuous Integration

This chapter describes details about the continuous integration we use at the PerfCake project. The target audience are core developers with appropriate access rights.

As the Continuous Integration system we use Jenkins hosted for free by CloudBees (<https://perfcake.ci.cloudbees.com/>). The free conditions require us to log in to their system at least once every two weeks which we sometimes forget and it gets hibernated. This can explain why you might not find it running.

We have several important jobs that are typically triggered nightly when there is an update to the Git repositories. PerfCake-master and PerfCake-devel jobs build, test, and create artifacts for the master and devel branches in the source code. PerfCake-Documentation and PerfCake-Documentation-Devel jobs build documentation for the released and for master branch in Git.

Currently, the tests consume more than 64MB of memory and are required to run on large slave instances.